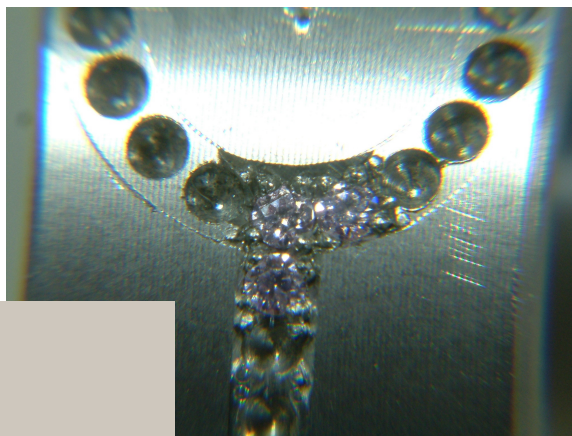


TRAINING FOR MICROSCOPE SETTING MICRO PAVE

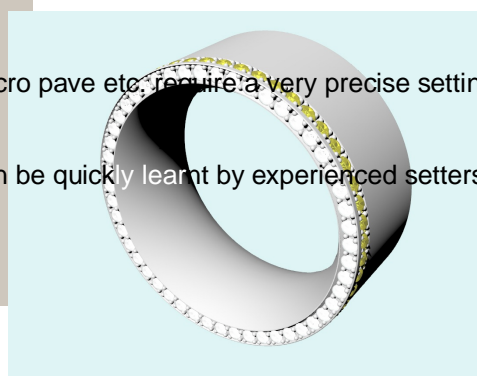


Micro pave

Micro Pave is a term that describes pave setting with smaller stones (1.20 mm and smaller).

The today's new sophisticated setting techniques like micro pave etc. require a very precise setting equipment and some new setting methods.

The use of the new equipment and the new methods can be quickly learnt by experienced setters with an open mind for modern methods.



The Training Concept:

The concept is to achieve a high quality level of pave setting small stones with the help of modern equipment. It is also very helpful to improve the master making.

Due to a very systematic teaching method the visible success comes within a few months only.

The Training Course:

The regular procedure to introduce this technology is to furnish up a temporary training centre with at least one master table with microscope (SCOPE MASTER®) and a few more simple microscope tables (SCOPE SATELLITE®).

One experienced master setter will be trained in these new setting techniques plus he will be advised in assistance of new trainees during the same training session.

5 to max. 10 trainees from different backgrounds can be trained during one batch.

The training usually starts with an initial training session of 10 days in presence of the consultant. During these 10 days the people will be advised in the use and adjustment of the new equipment.

The shaping and sharpening of Tungsten Carbide gravers and other small special tools will be demonstrated in all details. Also the new setting techniques will be demonstrated repeatedly.

The work starts on a sequence of special designed sample pieces for app. 3 months in absence of the consultant and in the end stands a new visit of another 10 days with new, slightly more difficult sample pieces which allow an evaluation of the skills achieved by the trainees.

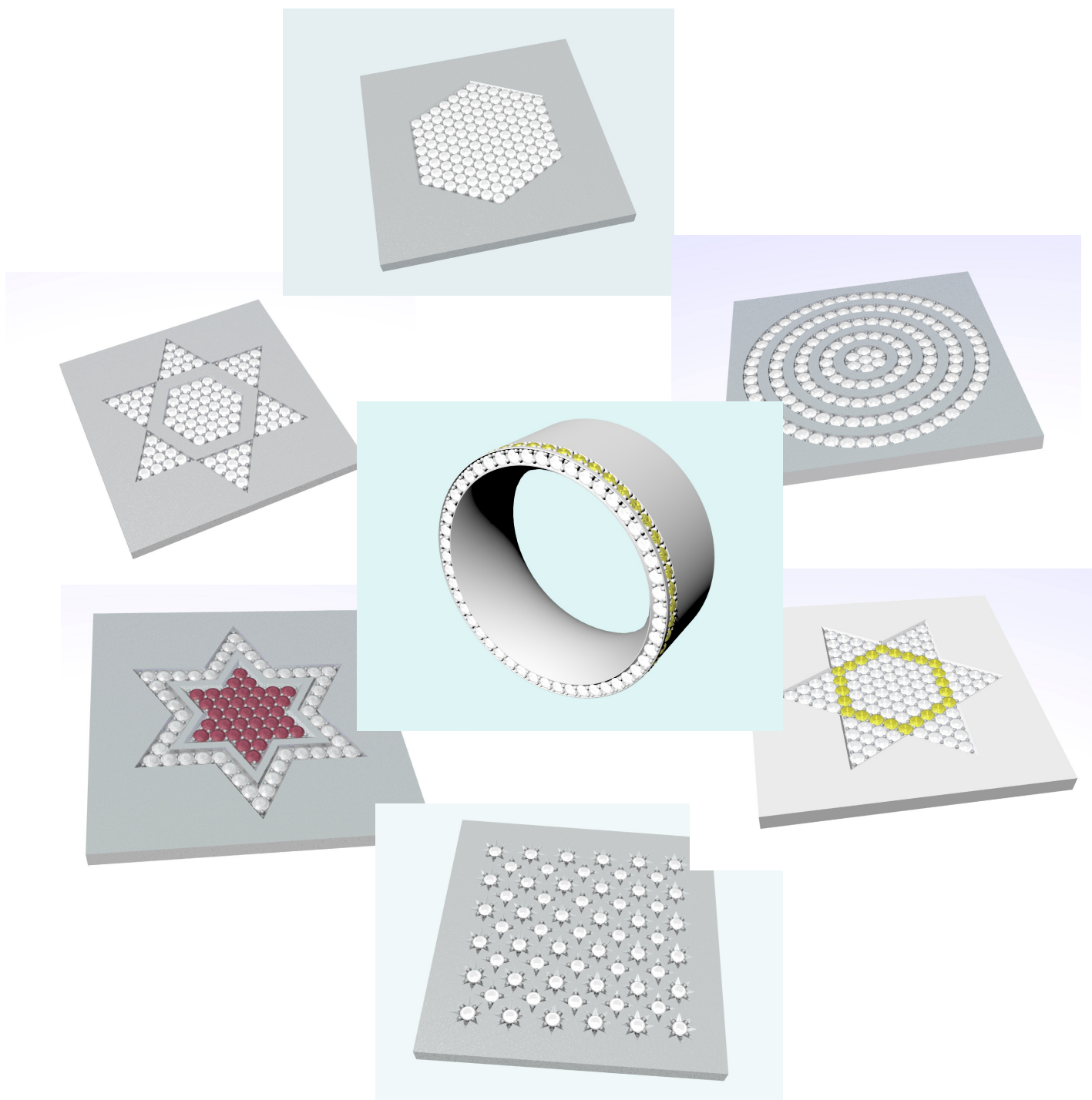
Advanced training for new sophisticated stone setting techniques

The sample pieces:

The sample pieces are made from high quality rolled silver sheet which are provided by us. The holes for the stone seats are drilled by a CAM machine with computer precision so that the trainees can concentrate on the cutting process and have soon some good visible results.

We are using CZ stones because the use of real diamonds would be too expensive. To ensure a good stone quality we are using “SIGNITY” stones. SIGNITY stones are machine cut and especially the equal sizing is very essential for the final quality of the samples.

The layouts in the samples are very geometrical (straight rows ; curved rows along the edge ; circles) which makes the quality check very easy and one can see immediately which are the strong and which are the weak points of the individual person.



Advanced training for new sophisticated stone setting techniques

The equipment:

SCOPE MASTER®



The heart of this training centre is a special made table which is equipped with a microscope and a number of sophisticated tools and machines. This table can be called as master workbench and can be seen as reference workplace.

This equipment set is available from us under the name: **SCOPE MASTER®**

The full equipped **SCOPE MASTER®**, once it is installed, can be permanently used for the following reasons:

- To train people in the use of the microscope until they are familiar with it and have achieved some routine.
- To be used in idle times by QC-people for doubtful cases and things which can be much better seen under the microscope.
- To be used by master makers for very complicate operations in the area of goldsmith works.
- To be used by the so called “trial series” operators in the area of stone setting and master making

With these above mentioned points the master workbench can be kept busy all the time and the investment was profitable.

Some more simple benches can be added as “satellites” later, when the training on the microscope table was successful and will become the permanent working stations of the individual setters.

These tables, partly equipped with one microscope and the bench mate system are available under the product name: **SCOPE SATELLITE®**

The tables are made in a size (width: 86 cm) which fits in every workshop and can so replace existing benches.

SCOPE SATELLITE®

